

CRIMSON CIRCLE CONNECTION CENTER

VISITOR INFORMATION

WELCOME!



The Crimson Circle Connection Center, also known as the Studio, opened its doors in June 2014. Its birth and transformation into a state-of-the-art video recording studio was financed with donations from Shaumbra supporters all over the world. It serves as the Colorado location for the Monthly Webcast & Shoud along with various other Crimson Circle events, webcasts and recordings.

Two years later the space next door was transformed into the Masters Club, opening its doors in August 2016. It is a place for Shaumbra to gather, connect and commune during the monthly meetings and other events that are held at the Connection Center.

In this document you will find helpful information about local lodging, restaurants and other details.



BASIC INFORMATION	page 1
TRANSPORTATION & AMENITIES	page 2
LODGING	page 3-4
RESTAURANTS AND CAFES	page 5-6
ATTRACTIONS	page 7
MAPS	page 8-9

GETTING HERE



159 South McCaslin Blvd. Suite C, Louisville, CO 80027

40 minutes from Denver International Airport (DIA)

DIRECTIONS

From HWY 36 (Denver-Boulder Turnpike):

- Exit north onto McCaslin Boulevard
- Left (west) on West Century Drive (.7 mile)
- Right (north) on Century Circle, go past Walgreens
- The CCCC is on the left, use any of the parking spaces
- Enter via C door on the west side of building

CRIMSON CIRCLE CONNECTION CENTER

VISITOR INFORMATION

CCCC • 159 South McCaslin Blvd. Suite C, Louisville, CO 80027

TRANSPORTATION

Car Rentals

- Avis (720) 887-3745
<http://www.avis.com>
- Enterprise (720) 890-8709
<http://www.enterprise.com>
- Hertz (303) 465-0081
<https://www.hertz.com>
- Payless Car Rental (727) 321-6352
<https://www.paylesscar.com>

More Options

- Airport Parking Transport
http://www.flydenver.com/parking_transit
- Hotwire
<http://www.hotwire.com/car-rentals>

Shuttles from Denver International Airport (DIA) to Louisville, Colorado

- Super Shuttle (303) 370-1300
www.supershuttle.com
- Eight Black Airport Shuttle (720) 223-5474
www.eightblackairportshuttle.com
- Hotel transportation
Some hotels offer shuttle service to and from DIA
- Be sure to check Uber and Lyft

LOCAL AMENITIES

Shops

[Walgreens](#) – Pharmacy

191 McCaslin Blvd • (303) 666-7816
Mon-Fri 7am-10pm, Sat-Sun 8am-10pm

[Safeway](#) – Groceries, pharmacy

910 West Cherry Ave • (303) 666-8950
Open every day 6am-11pm

[Target](#) – Groceries, pharmacy, clothing, home

400 Marshall Rd. • (303) 209-0106
Open every day 7am-10pm

[TJ Maxx](#) – Clothing, office, home

510 Marshall Rd. • 720-304-7330
Mon-Sat 9:30am-9:30pm, Sun 10am-8pm

[Home Depot](#) – Hardware, tools, home

1200 W Dillon Rd (303) 661-9600
Mon-Sat 6am-10pm, Sun 7am-8pm

ATMs and banks

There are plenty of ATMs or places to withdraw money in Louisville and Superior. Click here for a map:

<https://goo.gl/maps/gVY4l>

Sightseeing

The historic old-town part of Louisville has many nice shops and restaurants. Boulder is less than 15 minutes away via hwy. 36 or McCaslin > S. Boulder Rd. and has lots of wonderful restaurants, shops and parks to explore.



CRIMSON CIRCLE CONNECTION CENTER

VISITOR INFORMATION

The CCCC Studio is conveniently located near a number of hotels and other amenities. Some are within walking distance, but the area is best visited and explored by car (see previous page for car rental tips). Below are listed some of the nearest hotels, and there are many more in nearby Boulder & Broomfield. You may also visit "[Colorado Shaumbra Rooms](#)" on Facebook, a group hosted by Crimson Circle in which local Shaumbra offer rooms for visitors, possible ride sharing options, etc.

LODGING

LOCAL HOTELS (approximately 1 mile from CCCC)

Courtyard by Marriott

948 West Dillon Road, Louisville, Colorado, 80027
(303) 604-0007
www.marriott.com

Best Western Plus Louisville Inn & Suites

960 West Dillon Rd, Louisville, Colorado 80027
(303) 327-1215
www.bwpluslouisville.com

Hampton Inn

912 West Dillon Rd, Louisville, CO 80027
(303) 666-7700
www.hilton.com

La Quinta Inn & Suites

902 West Dillon Rd, Louisville, Colorado 80027
(303) 664-0100
www.wyndhamhotels.com

Quality Inn

1196 Dillon Rd., Louisville, Colorado, 80027
(303) 604-0181
www.choicehotels.com/colorado/louisville/quality-inn-hotels/co097

Marriott Residence Inn

845 Coal Creek Cir, Louisville, Colorado 80027
(303) 665-2661
www.marriott.com/hotels/travel/vborl-residence-inn-boulder-louisville/



CRIMSON CIRCLE CONNECTION CENTER

VISITOR INFORMATION

LODGING *cont'd*

AREA HOTELS (4-5 miles from CCCC)

Renaissance Boulder Flatiron Hotel

500 Flatiron Blvd, Broomfield, CO 80021

(303) 464-8400

www.renaissanceflatiron.com

Hyatt House

13351 W Midway Blvd, Broomfield, CO 80020

(720) 890-4811

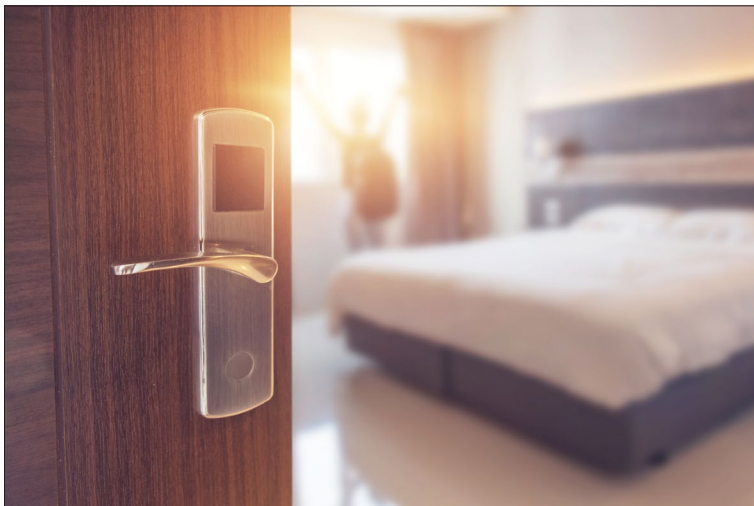
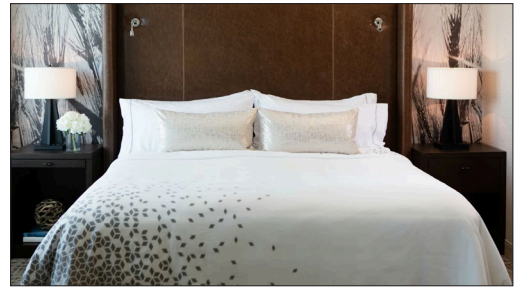
<http://broomfield.house.hyatt.com/en/hotel/home.html>

Omni Interlocken Hotel

500 Interlocken Blvd, Broomfield, CO 80021

(303) 438-6600

www.omnihotels.com/hotels/denver-interlocken



For more hotels in the area,
check out this map:

<https://goo.gl/maps/P4PBn>

CRIMSON CIRCLE CONNECTION CENTER

VISITOR INFORMATION

The Crimson Circle Connection Center is surrounded by many delightful places to eat, drink and be merry! From Thai, Indian and Asian to Italian, Mexican and all-American cuisine, there's a restaurant, café or coffee shop to please every taste.

RESTAURANTS

LOCAL RESTAURANTS (1 mile or less from CCCC)

Bao Asian Fusion & Bar

594 S McCaslin Blvd, Louisville, CO 80027
(303) 926-1888

www.baoasianfusion.com

Busaba – Thai Cuisine

133 McCaslin Blvd, Louisville, CO 80027
(303) 665-0330

www.busabaco.com



Organic Sandwich Company

459 S. McCaslin Blvd, Louisville, CO 80027
(720) 598-5931

www.organicsandwichco.com



Little Tokyo

332 S McCaslin Blvd, Louisville, CO 80027
(303) 926-8987

www.yelp.com/menu/little-tokyo-louisville

Murphy's Tap House

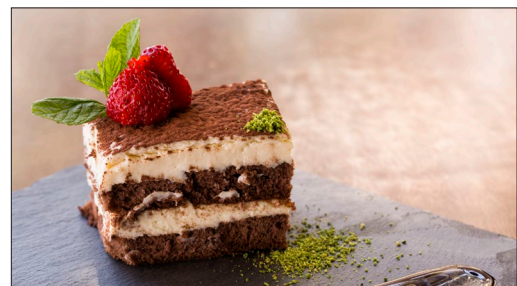
585 S McCaslin Blvd, Louisville, CO 80027
(720) 612-4616

murphystaphouse.com

Chipotle Mexican Grill

375 S McCaslin Blvd, Louisville, CO 80027
(720) 890-0670

www.chipotle.com



CRIMSON CIRCLE CONNECTION CENTER

VISITOR INFORMATION

RESTAURANTS *cont'd*

Parma Trattoria & Mozzarella Bar

1132-1 West Dillon Road, Louisville, CO 80027

(303) 284-2741 | Reservations

www.parmamozzarellabar.com

Via Toscana

356 S McCaslin Blvd, Louisville, CO 80027

(303) 604-6960

www.viatoscana.com

Spice China

269 McCaslin Blvd, Louisville, CO 80027

(720) 890-0999

www.spicechinalouisville.com

Tibet's Restaurant & Bar

321 S. McCaslin Blvd Suite A, Louisville, CO 80027

(303) 665-2557

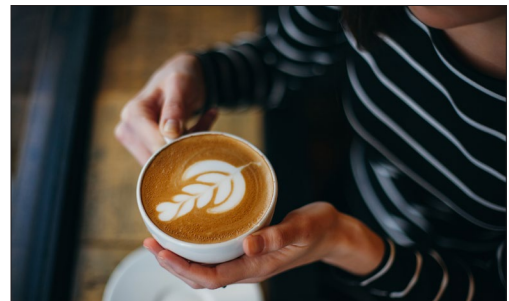
www.tibetsrestaurant.com

Paul's Coffee & Tea

956 W Cherry St Unit 101

(720) 259-1723

www.paulscoffeeandtea.com



For more restaurants & cafés
in the area, check out this map:
<https://goo.gl/maps/auHTv>

CRIMSON CIRCLE CONNECTION CENTER

VISITOR INFORMATION

ATTRACTIONS

Old Town Louisville – restaurants & shops

www.downtownlouisvilleco.com

Louisville Winter Skate (winter)

www.uncovercolorado.com/ice-skating/louisville-winterskate

Friday Night Street Faire & concerts (summer)

www.downtownlouisvilleco.com/street-faire

Coal Creek Trail

http://trailsnet.com/coal_creek_trail.html

Louisville Parks, Recreation & Open Space

www.louisvilleco.gov

Flatirons Crossing Mall, Broomfield, Colorado

flatironcrossing.com

Boulder, Colorado

<http://www.boulderdowntown.com/>



For more things to do in the area, check out this link:

<https://www.bouldercoloradousa.com/things-to-do/>

CRIMSON CIRCLE CONNECTION CENTER

VISITOR INFORMATION

CCCC • 159 South McCaslin Blvd. Suite D, Louisville, CO 80027

Local Area

